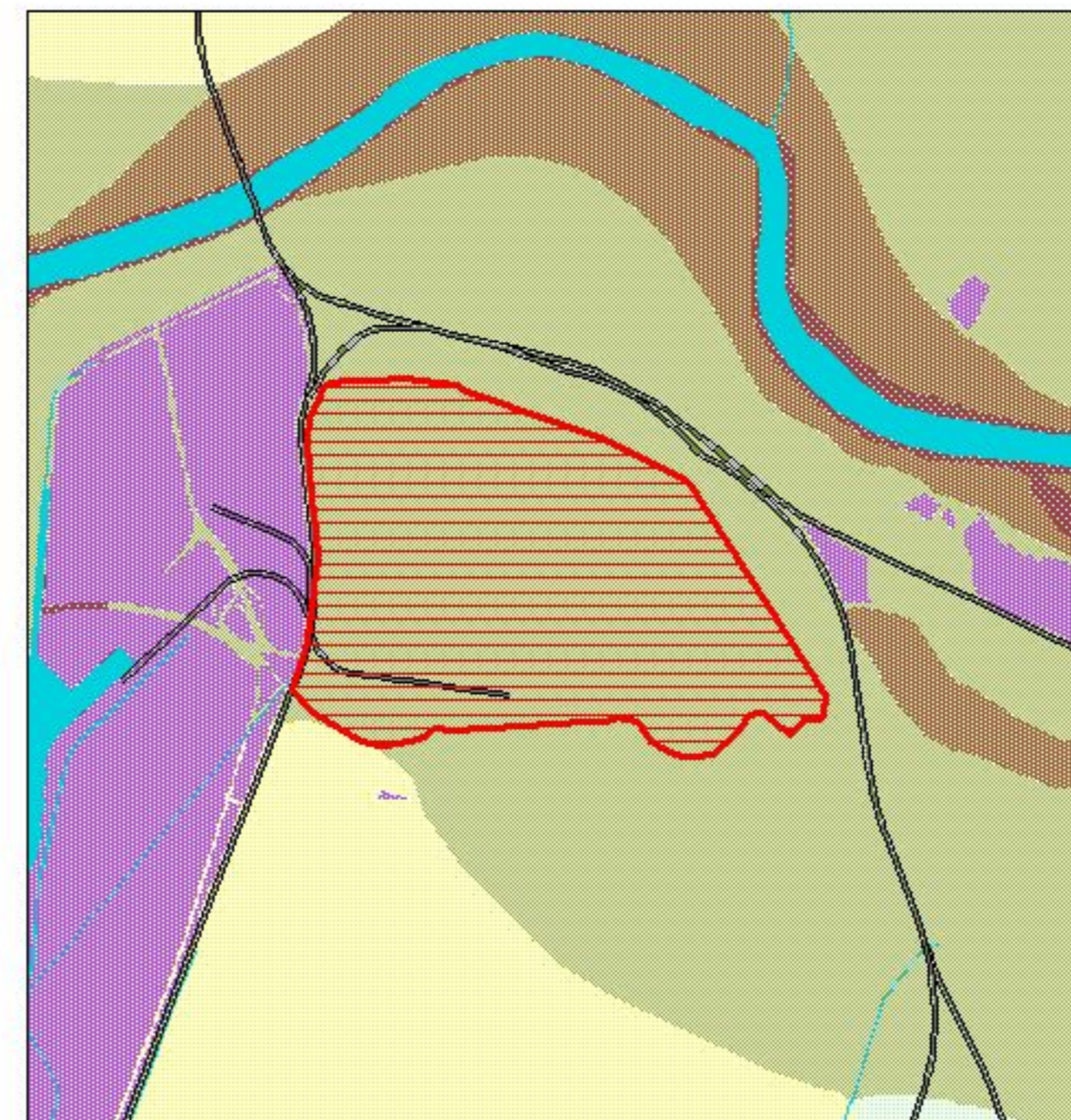
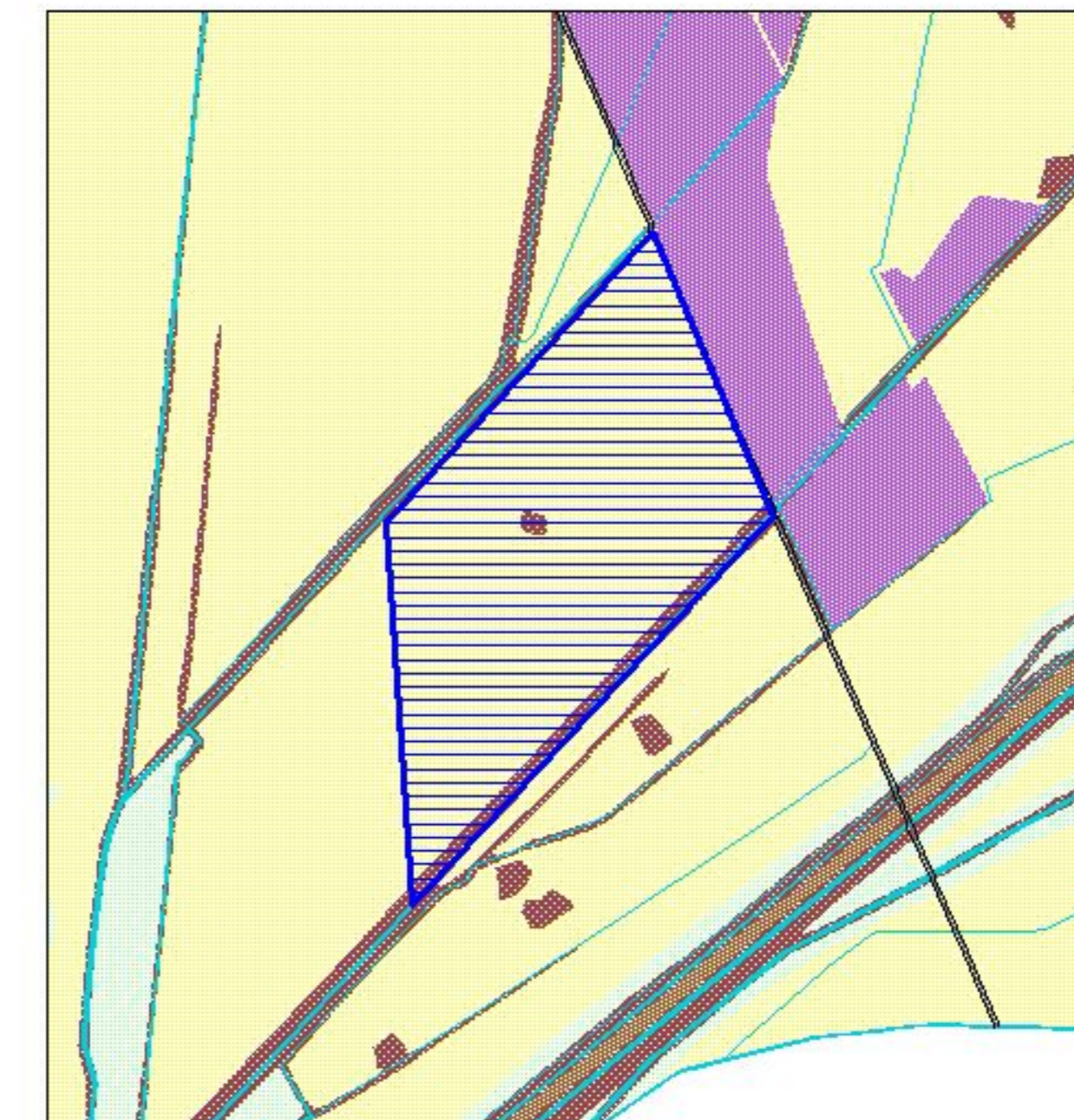


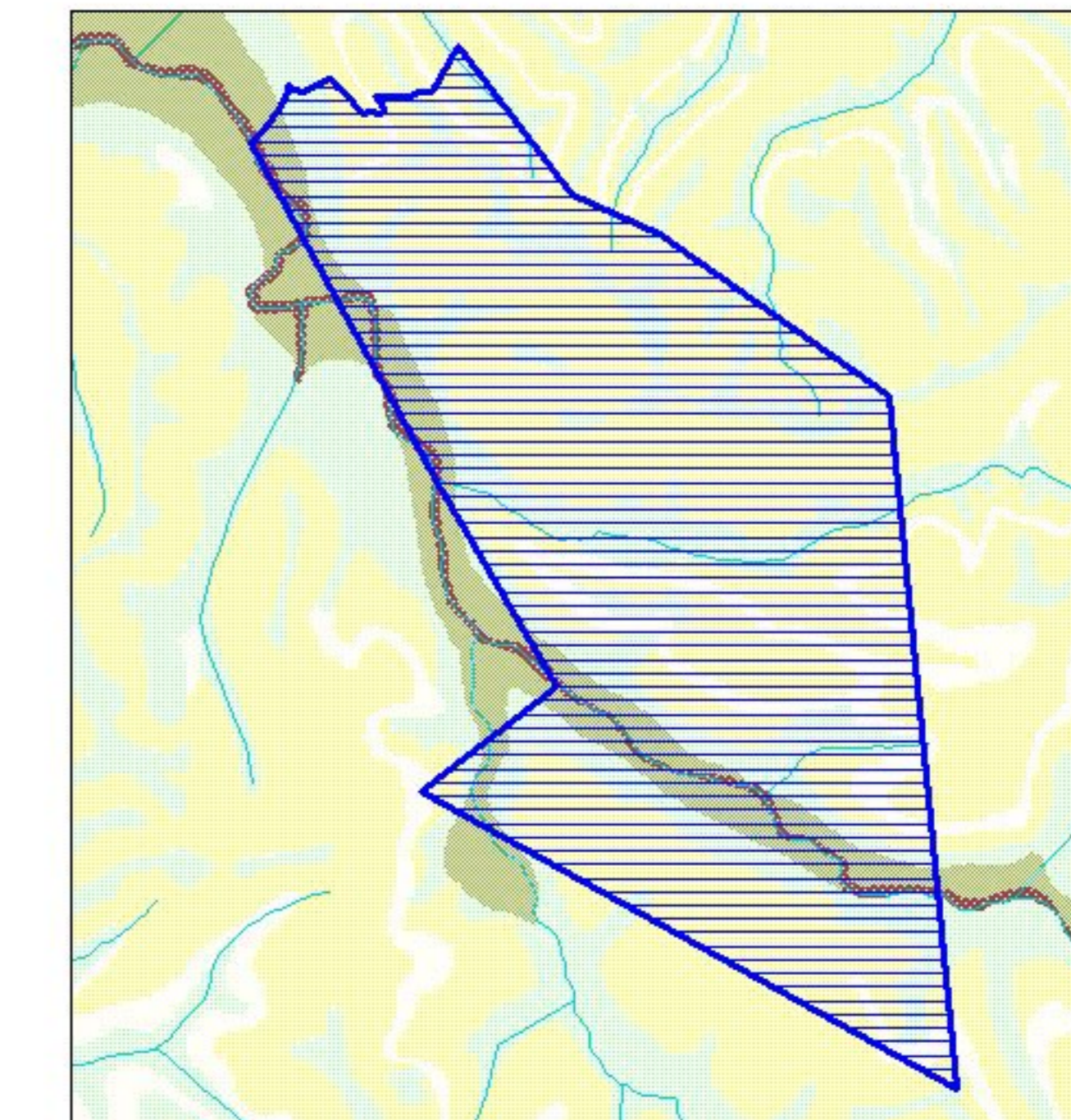
COMUNE: PISA
San Marco (conc. decaduta)



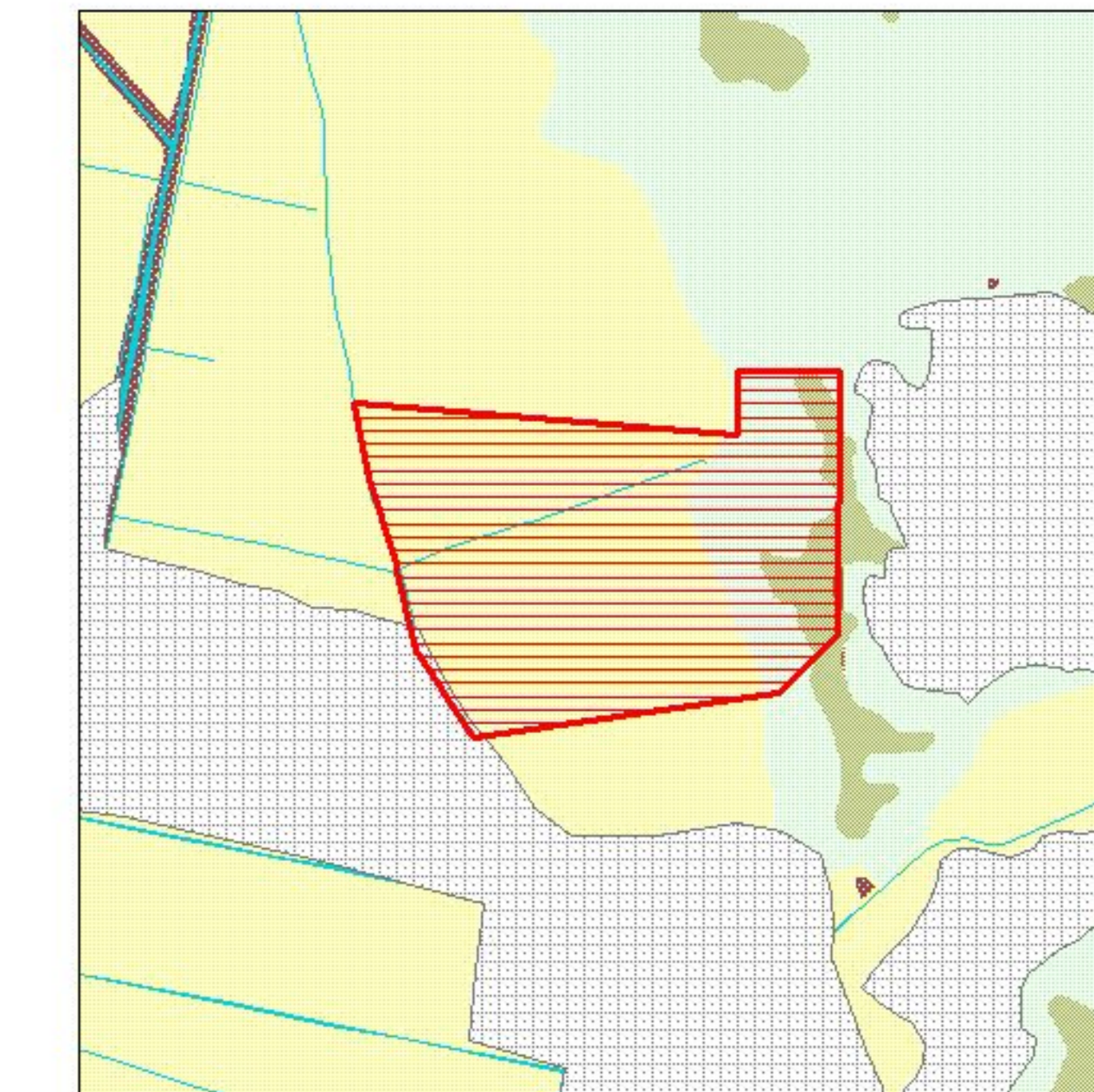
COMUNE: PISA
Ricovero Montacchiello (scad. conc. 03/07/2010)



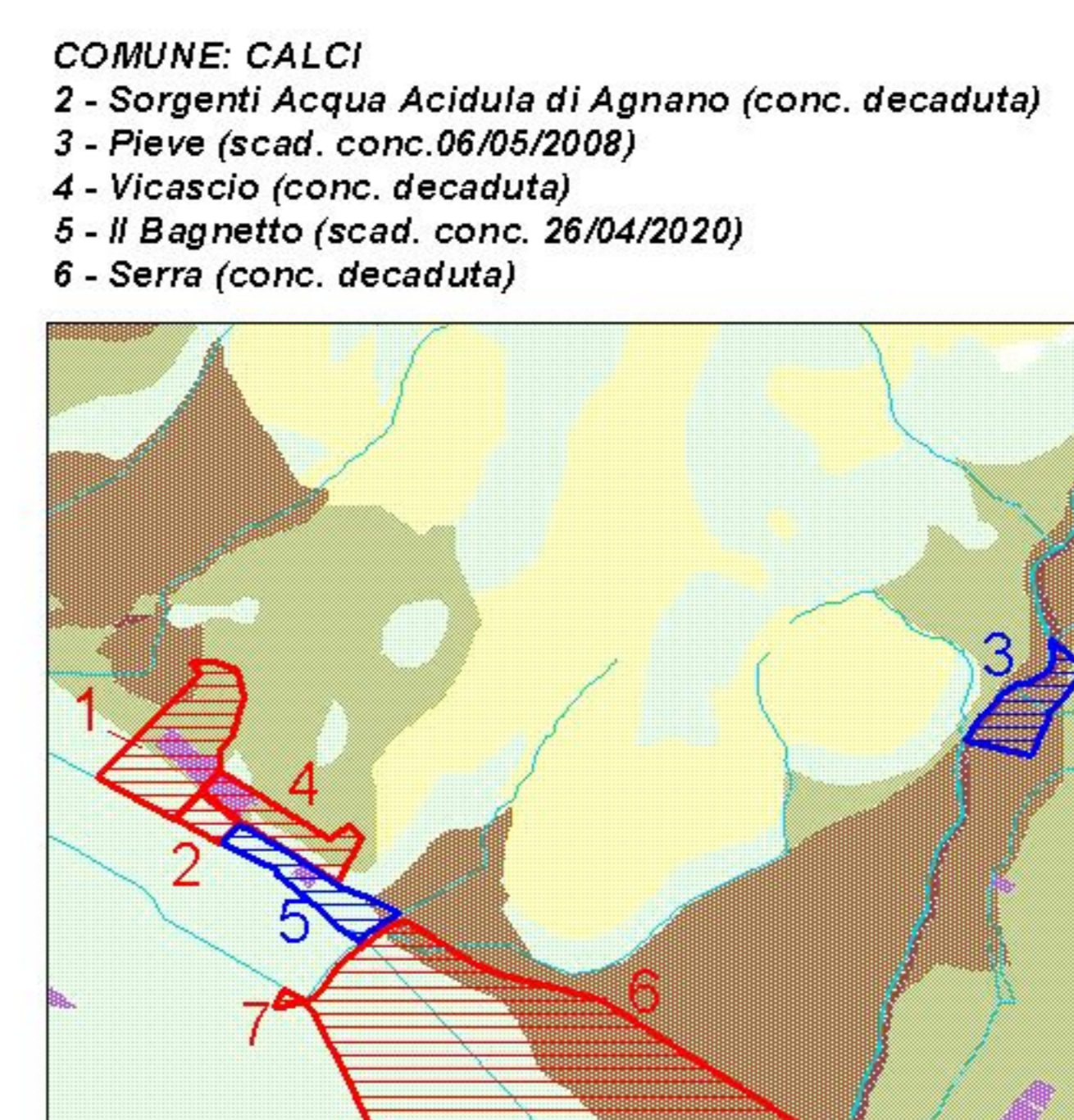
COMUNE: MONTOPOLI V., PALAIA, S. MINIATO
Tesorino (scad. conc. 16/07/2016)



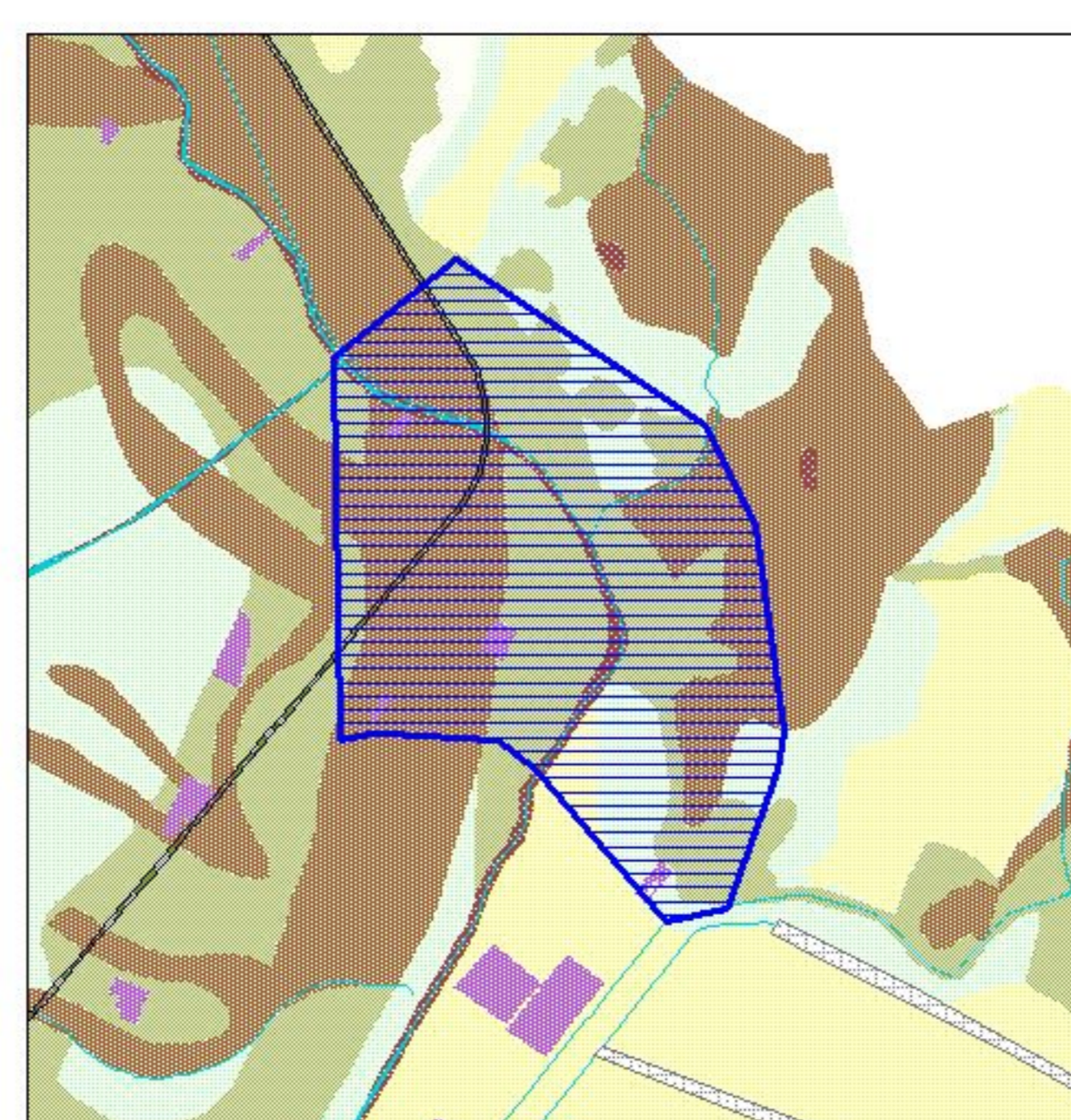
COMUNE: CASTELFRANCO DI SOTTO
Sorgente del Tiglio (conc. decaduta)



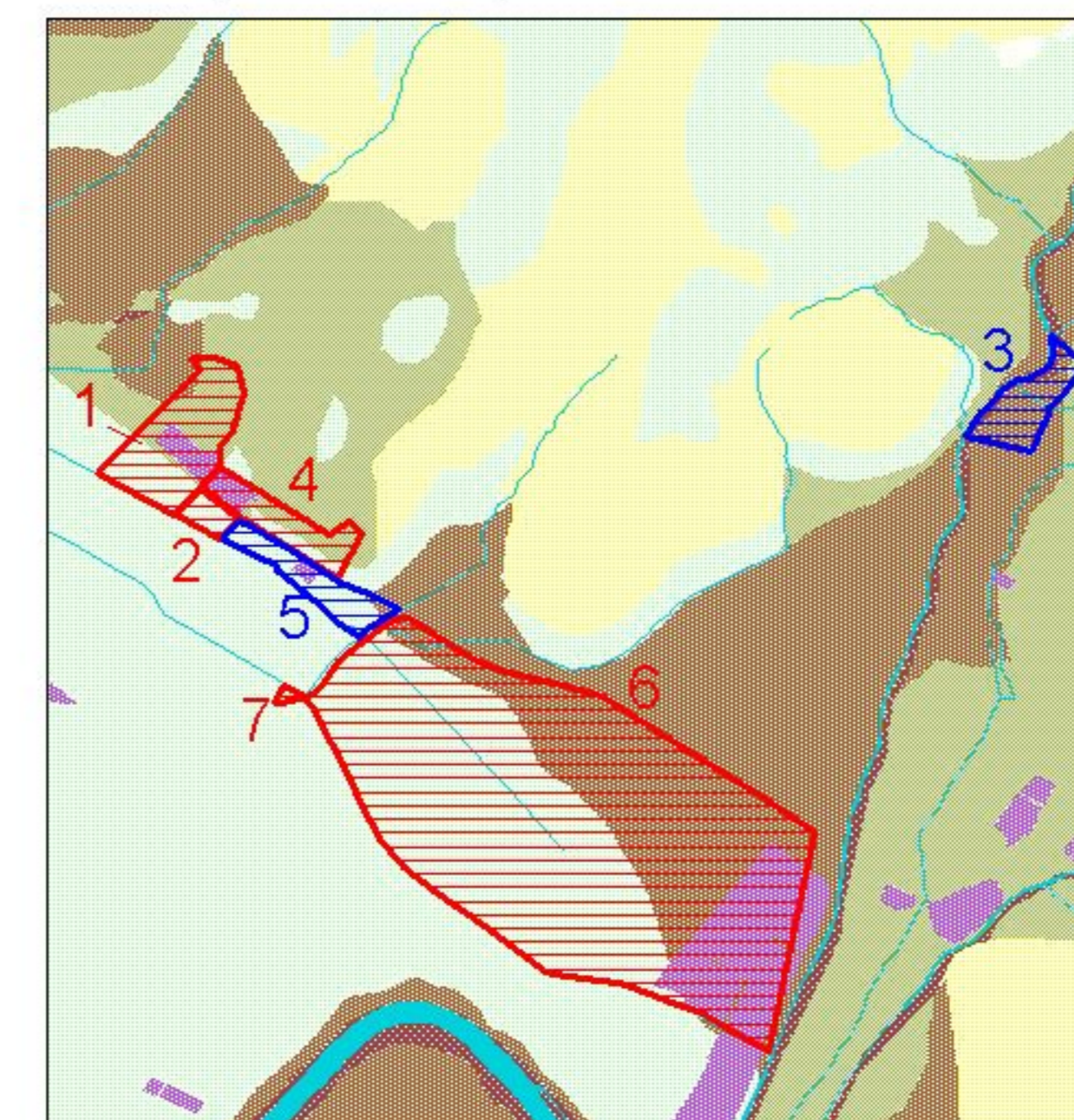
COMUNE: S. GIULIANO T.
1 - Bagnetto di Agnano (conc. decaduta)
7 - Corona (conc. decaduta)



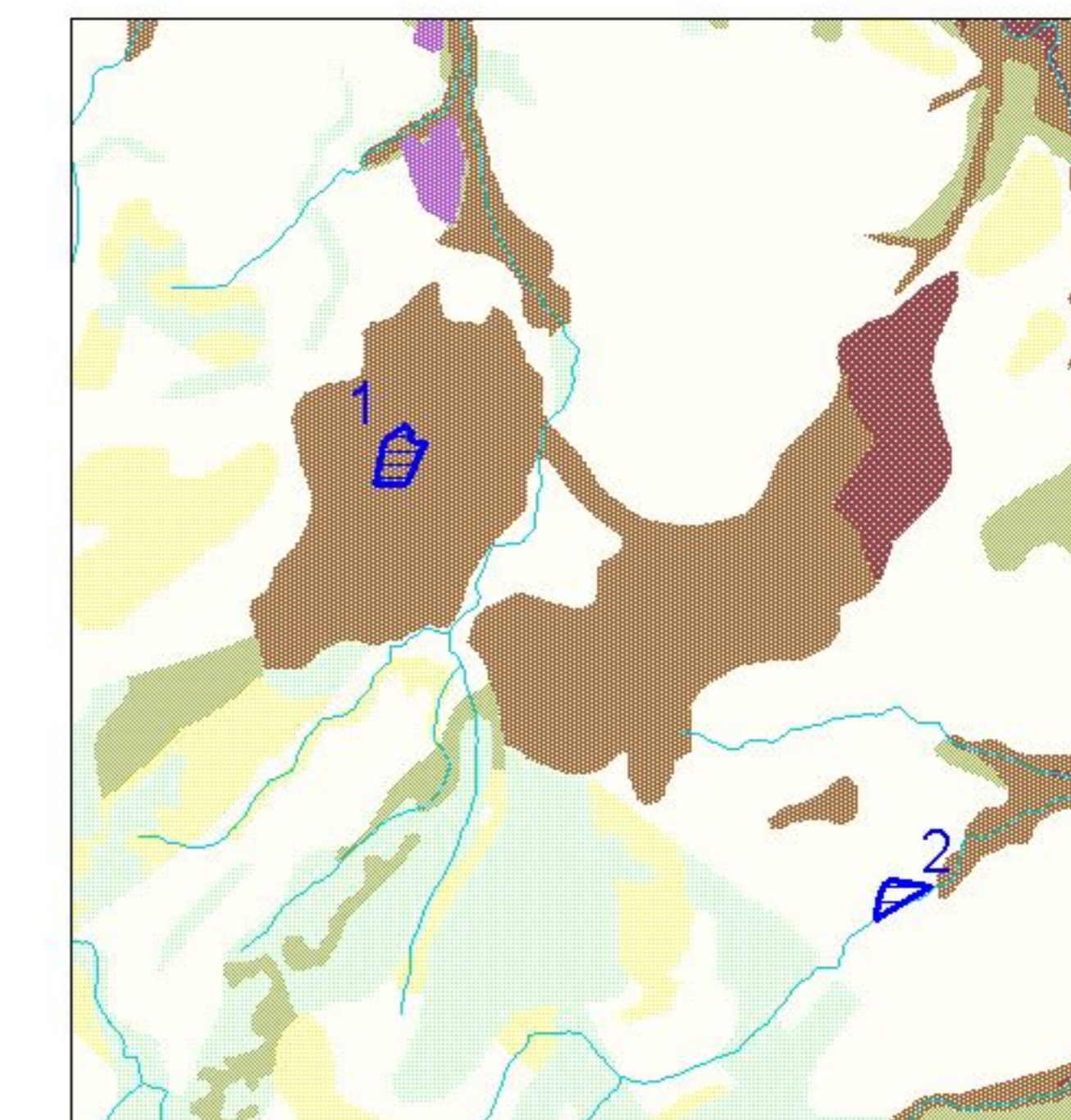
COMUNE: S. GIULIANO T.
Terme di San Giuliano (scad. conc. 09/06/2023)



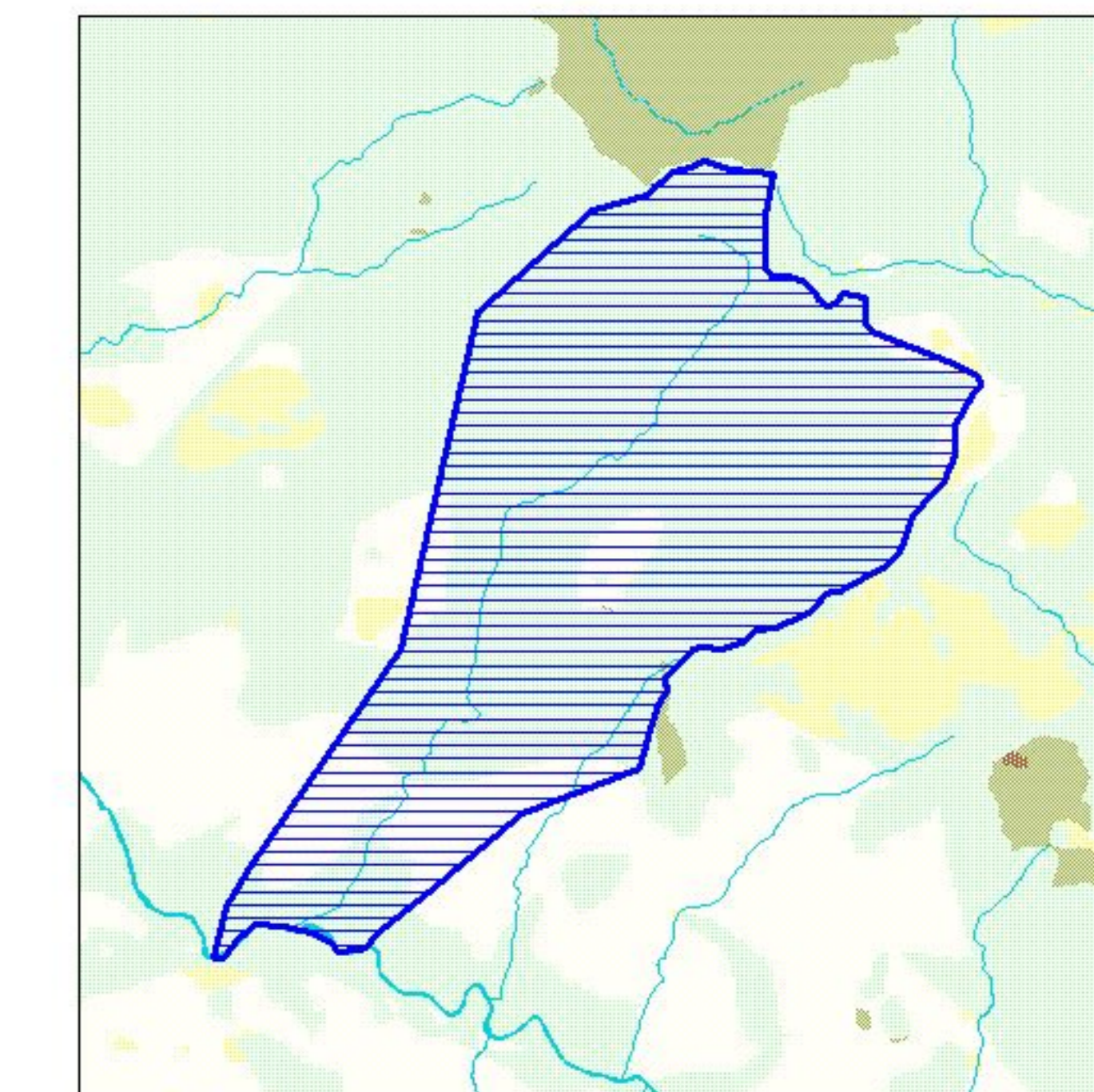
COMUNE: CALCI
2 - Sorgenti Acqua Acidula di Agnano (conc. decaduta)
3 - Pieve (scad. conc. 06/05/2008)
4 - Vicascio (conc. decaduta)
5 - Il Bagnetto (scad. conc. 26/04/2020)
6 - Serra (conc. decaduta)



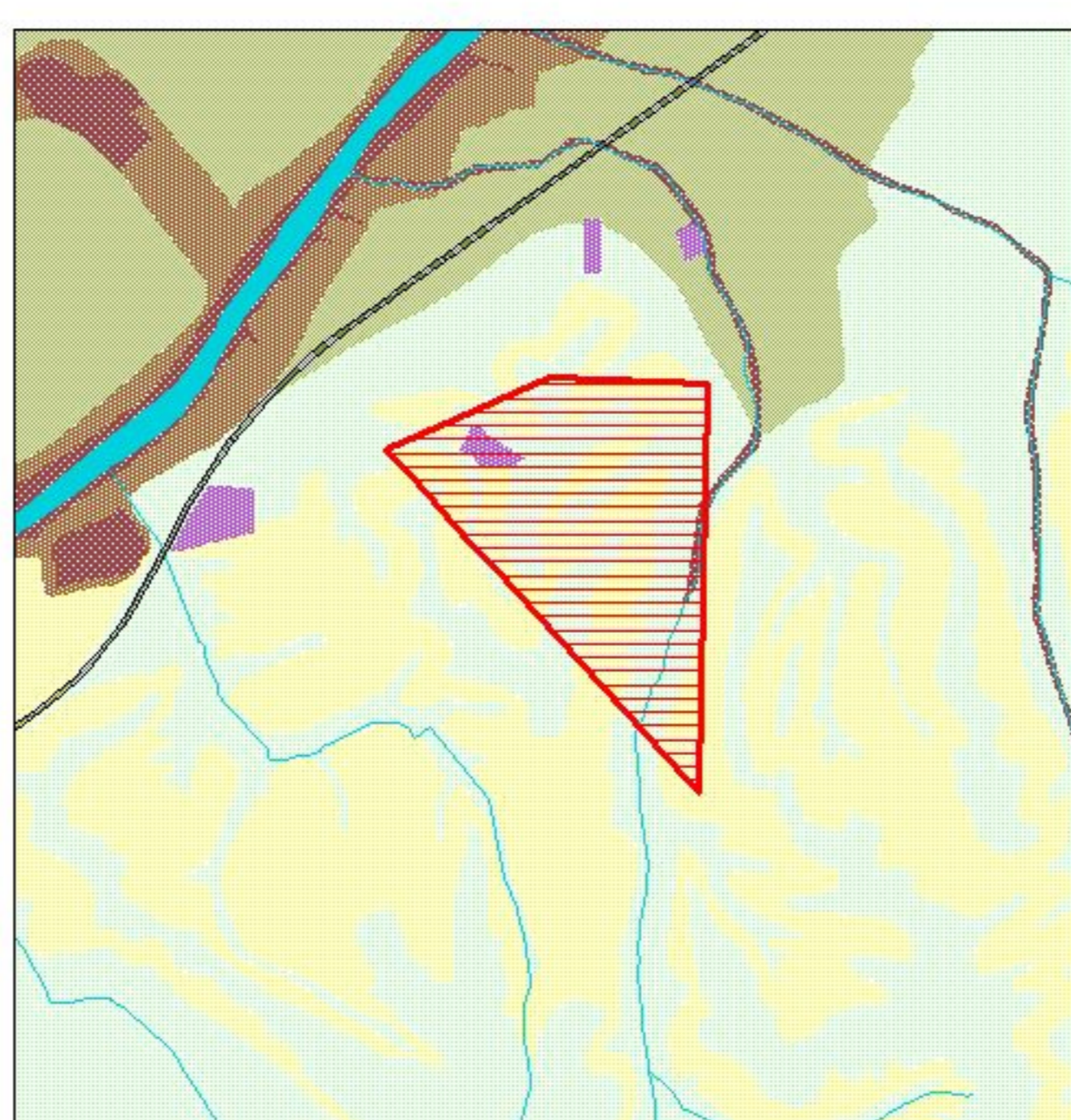
COMUNE: CASCIANA TERME
1 - Bagni di Casciana Terme (scad. conc. 20/07/2004)
2 - San Leopoldo (scad. conc. 27/04/2024)



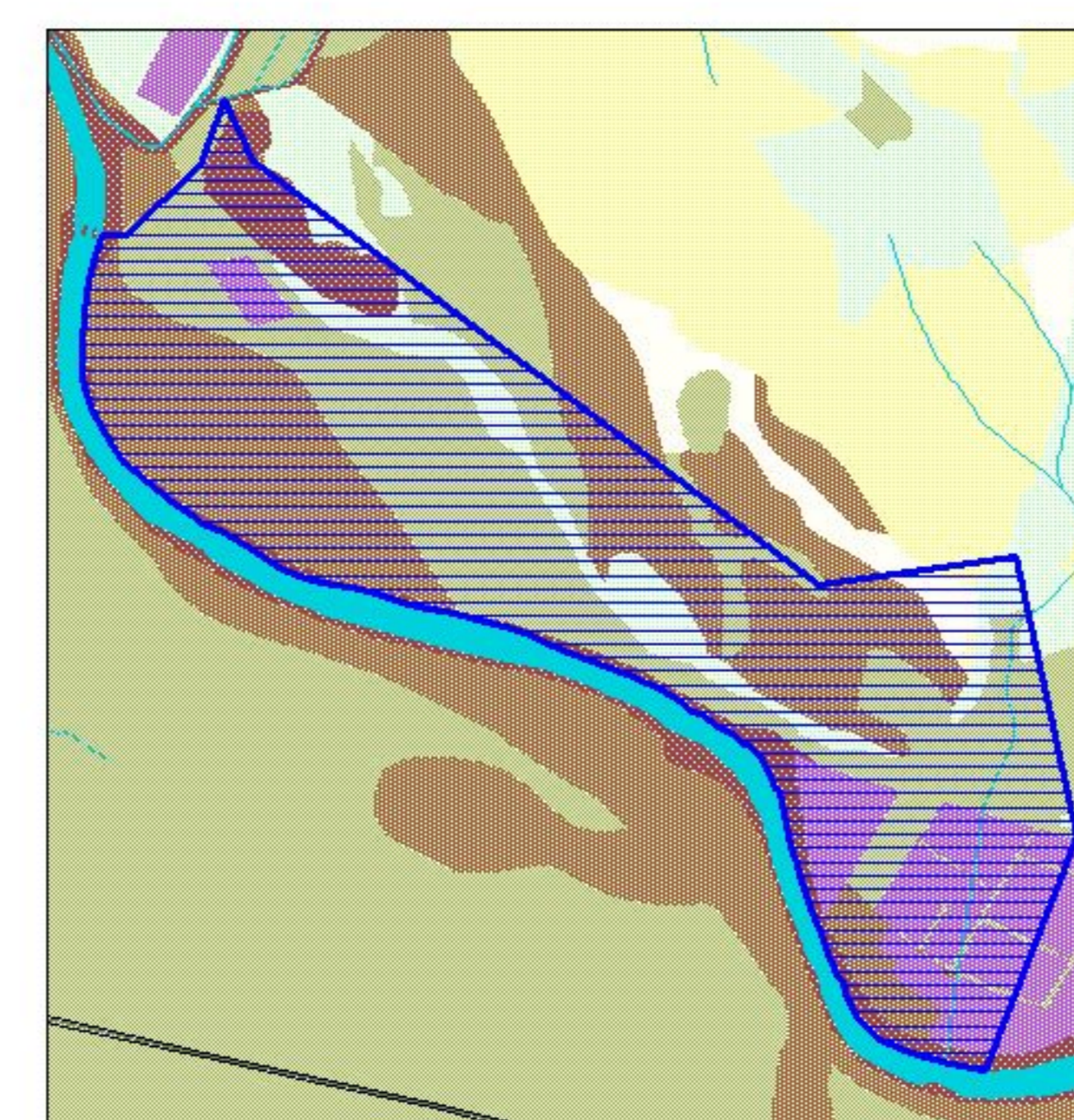
COMUNE: MONTEVERDI M., POMARANCE
Rivivo (scad. conc. 23/04/2024)



COMUNE: MONTOPOLI V.
Vallicelle (conc. decaduta)



COMUNE: VICOPISANO
Uiveto Terme (scad. conc. 29/08/2022)



CONCESSIONI MINERARIE PER LE ACQUE MINERALI Q.C. 13

- Concessioni Minerarie Acque Minerali**
- Concessioni decadute
 - Concessioni attive
 - reticolo idrografico
 - centri urbani
 - aree produttive
 - aree insediative a bassa densita'
 - ospedali
 - Autostrade, SGC FI-PI-LI
 - strade statali, regionali, provinciali e comunali
 - Ferrovie
 - limite amministrativo comunale
 - limit e amministrativo provinciale
- scala 1:120.000
Approvato il 27/07/2006
con delibera C.P. n°100

- concessioni minerarie acque minerali**
- Concessioni attive
 - Concessioni decadute
 - aree produttive
 - zone umide
- Vulnerabilità idrogeologica (prov. Pisa)**
- irrilevante
 - bassa
 - media (sottoclasse 3a)
 - media (sottoclasse 3b)
 - elevata (sottoclasse 4a)
 - elevata (sottoclasse 4b)